

## TECHNICAL DATA

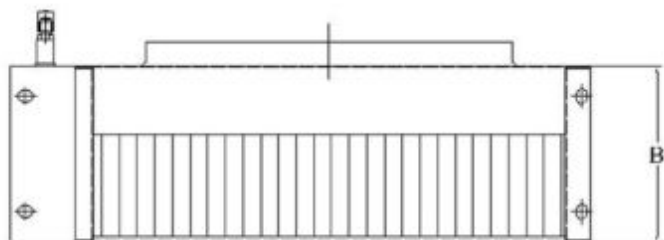
Efficiency R404a:	1,65 kW
Efficiency R449a:	1,57 kW
Air flow:	567 m <sup>3</sup> /h
Weight:	7 kg
Air Velocity:	2,16 m/s
Surface:	3,8 m <sup>2</sup>
Internal Volume:	0,7 dm <sup>3</sup>
Fin Spacing:	3,17 mm
Fins material:	Aluminium
Tubes Material:	Miedź
Inlet Header:	1 x 3/8"
Outlet Header:	1 x 3/8"
Execution:	galwanizowany, pokryty czarną farbą

## FANS

Power:	44 W
Current:	0,2 A
Fans Nr.:	1
Blade Diameter:	250 mm
Power supply:	220V/1Ph/50Hz
Op. Mode :	Delta
Speed:	1357 rpm
Suggested fans:	Olvent YWF.A4S-250S-5DIIIA00 Ziehl-Abegg FN035-4EK.0F.V7P3

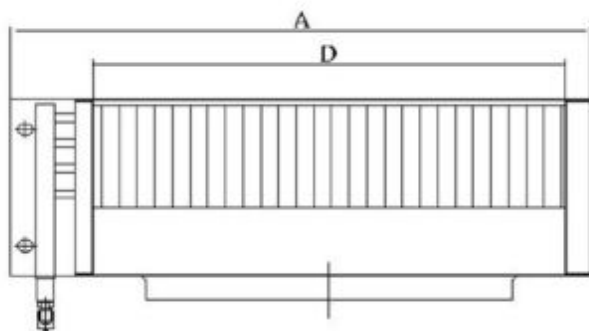
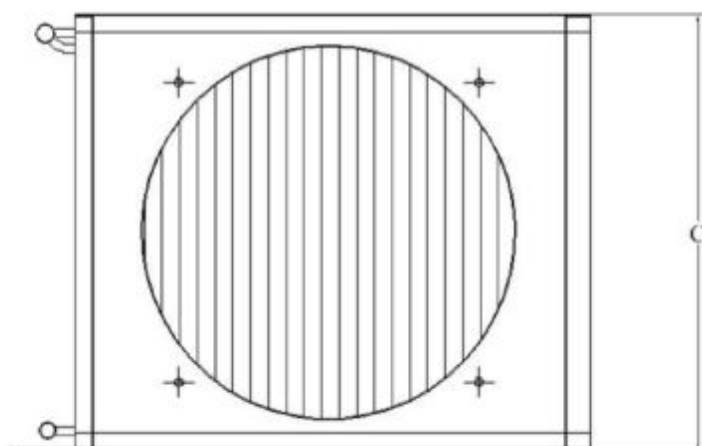
**DIMENSIONS**

A:	380 mm
B:	140 mm
C:	280 mm
D:	290 mm

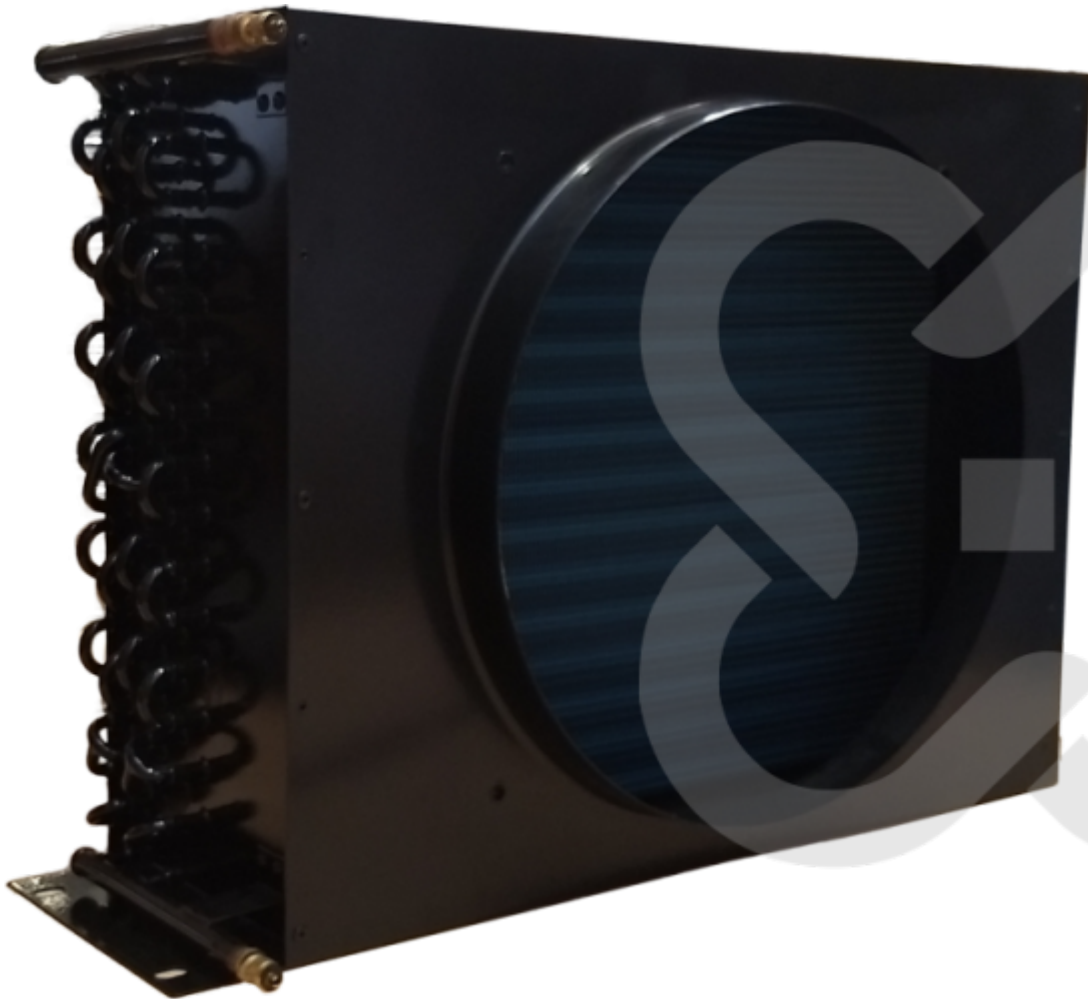


**Dimensions:**

(A)	380 mm
(B)	140 mm
(C)	280 mm
(D)	290 mm



**SAMPLE PICTURES**



Pictures of some products may vary. Every effort was made to information contained in this catalog are correct. Due to the constant technological developments reserves the right to make changes without notice.